

Offset Bracket Manual

This product is intended for use on the RockyMounts Tandem Mount R4. The bracket allows more versatile positioning on your crossbar if your front chaining contacts the vehicle during loading. Please use this for installing the Offset Bracket and refer to your Tandem Mount R4's manual for use.

If you have not assembled your Tandem Mount, please do so according to the Assembly instruction in the manual included with the Tandem Mount.

Installing the Offset Brackets

Note: Enclosed with the Offset Bracket are four Carriage Bolts, two 1 ¼" Bolts, and two 2 ½" Bolts. You will use these in addition to two 2" Carriage Bolts that are included with the hardware kit of the Tandem Mount. When you are done, there should be two extra 2" carriage bolts that are not needed when the offset bracket is used.

Bolt one of the Offset Brackets to the aluminum collar using the outside hole (Figure #1) and the 1 ¼" carriage bolt. Drop the bolt through the outside hole in the front aluminum collar and through the outside hole in the offset bracket. On the underside place the flat washer and nyloc hex onto the bolt and tighten firmly (Figure #2) with an adjustable or 1/2" wrench. Repeat with the adjustable rear aluminum collar. There must be an offset bracket on BOTH the front and rear aluminum collars.

Installing on your Thule® or Yakima® crossbar

- 1) If you are using a Thule® crossbar, remove the plastic inserts in the four plastic bar clips from the hardware bag of the Tandem Mount. If you are using a Yakima® crossbar, proceed to step 2.
- 2) Place two plastic bar clips on the front bar, and two on the rear. It does not matter which direction they are facing. On each bar, one should be outside the tower, and one on the inside.
- 3) Place the Tandem Mount onto your crossbars. Pass a 2 ½" carriage bolt through Hole A (Figure #3) and through the Bar Clip which is positioned outside the tower (Note: This bolt should be passing through both the hole in the aluminum collar on the tandem mount and the hole in the offset bracket). Pass the 2" Carriage Bolt through Hole B and through the Bar Clip inside of the tower. Repeat for the rear crossbar. Tighten these hex nuts securely with an adjustable or ½" wrench. The bar clips are tight enough when the two halves touch, do NOT over tighten. Figure #4 shows the underside for clarity.
- 4) Follow the manual included in the Tandem Mount for operation, loading and unloading.

Fig 1

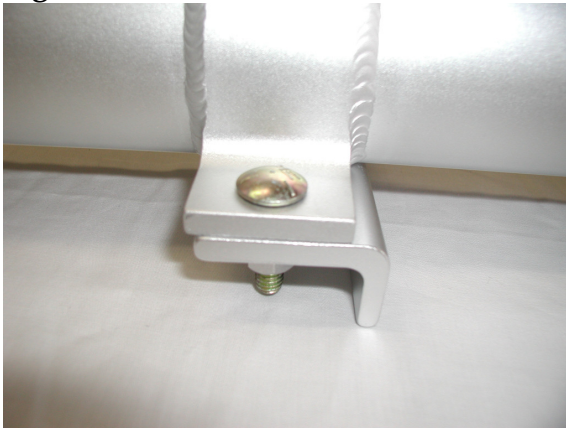
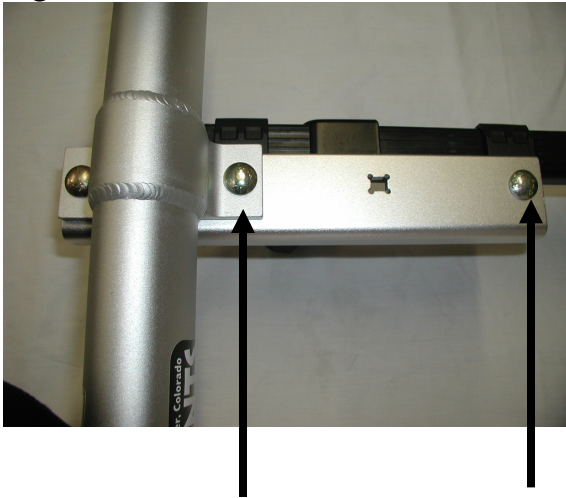


Fig 2

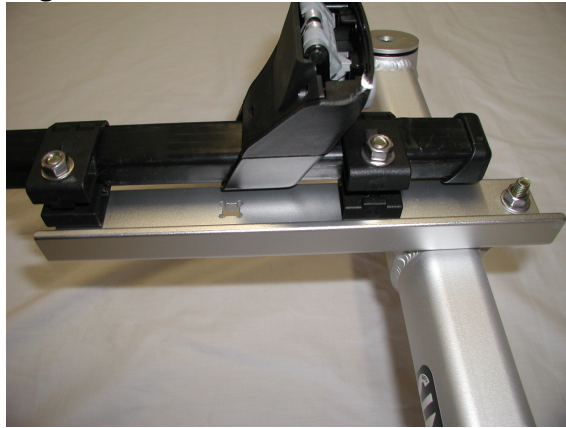


Fig 3



Hole A

Fig 4



Hole B

One Year Limited Warranty

Rocky Mounts Inc. Warrants to the original purchaser that the product will be free from defects in material and/or workmanship for one (1) year from the date of original retail purchase. Subject to the limitations stated below, Rocky Mounts will at its own expense during the one year warranty period repair or replace the defective component(s). The purchaser will be responsible for freight charges to Rocky Mounts. This warranty is only applicable if the instructions are correctly followed and the components are properly used. This warranty is not applicable if the defect is caused by normal wear and tear or exposure, the component(s) is damaged from misuse, abuse, theft, fire, accident, alteration, mixing third party components with the system and/or unlawful operation of the vehicle. Rocky Mounts Inc. cannot and does not assume responsibility for any damages to any property arising out of the improper attachment to a vehicle or a bicycle to the system or use of its products. This limited warranty applies to Rocky Mounts products and not to the products used in conjunction with Rocky Mounts products.

This warranty is in lieu of all other warranties, expressed or implied, and does not cover consequential damages of any kind arising from the use or misuse of Rocky Mounts products.

ROCKY MOUNTS DOES NOT AUTHORIZE ANY PERSON TO ASSUME, ON ITS BE- HALF, ANY OTHER OBLIGATION OR LIABILITY.